



*2020 Christmas
Artists' Studio
Open House*

COVID-19 Edition!!!

In Lindsborg

Saturday, December 5, 2020

10:00 am-5:00 pm

- ◆ *tour area artists' studios and galleries*
- ◆ *see demonstrations*

*Lindsborg Area Artists
present their
17th Annual Christmas
Artists' Studio Open House*

- ◆ *Tour artists' studios and galleries*
- ◆ *Watch demonstrations*

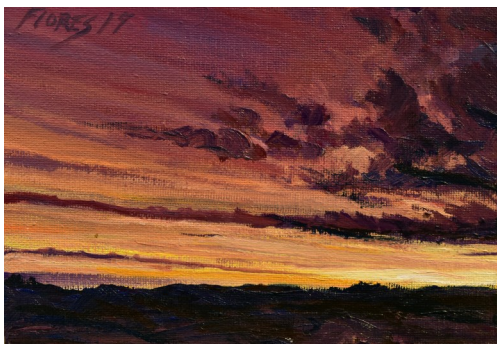
Please wear a mask, use hand sanitizer and practice social distancing for your safety and the safety of participating artists and their guests.

1. Dennis Flores and Noah Flores (785) 227-3211
 Bison Beads Jewelry, 2416 8th Ave, Marquette
 6 miles west of L'borg on Hwy 4 and 2¾ miles south on 8th Ave.

Dennis Flores. “As an avid collector of antiques and collectibles, the fire was lit by an introduction to trade beads by some friends. I like the primal essence, detail and intricate beauty of the many types of Trade Beads. So what started out as an occasional buy of one strand of beads has evolved into Bison Bead Jewelry. I see these eclectic creations as wearable history. Along with this is a deep respect for the many indigenous people whose lives were intertwined with the making and history of these beads.”



Noah Flores, “I have always been exposed to the outdoors since I was young. Growing up in rural Kansas gave me the privilege of playing outside, swimming in the river and going on family camping trips. Through all of these experiences, I have compiled a little knowledge of the land and a great appreciation for it. The majority of my artwork reflects those feelings. My landscape painting is a large collection of places that strike me in certain visual ways. I find that high alpine lakes dotted with wild flowers might provoke me to get into the studio, or the rumble and a bright flash of a lightning bolt over the plains might inspire me. I tend to look for majestic scenes, odd lighting and the quintessential idea of man’s scale and place in nature. Most of my paintings are completed in oil and finished in the studio. I have done some plein aire work and enjoy it, but working in the studio works for me right now. Typically, I take photographs and I occasionally produce small sketches to use as resource material. During the last several years, I have been traveling



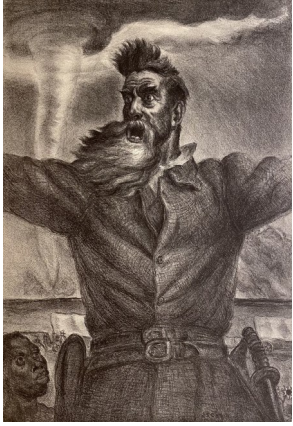
during the summer to the American West in search of iconic imagery and sublime landscapes. Visiting these places instills in me the essence of the place. It seems more real and tangible when I paint them. Hopefully, the viewers can see and feel this in the paintings.”

Lindsborg, KS



8. Birger Sandzén Memorial Gallery

401 N. First, (785) 227-2220, sandzen.org



The **Birger Sandzén Memorial Gallery** is dedicated to sharing the arts with the world through the life and vision of Swedish-American painter, printmaker, and educator Birger Sandzén (1871-1954). In addition to exhibiting works by its namesake, current shows include *In the Center of It All*, 90 years of the Prairie Print Makers; *Murmurations*, ceramic plates by Bo Bedilion; *Cascadian Colors*, woodcuts by Waldo and Corwin Chase; and the annual *Holiday Gift Show*. Hours: Tues. through Sat. from 10 a.m. to 5 p.m. and Sun. from 1 to 5 p.m.

Participating Studios and Galleries

Numbers correspond with **red** numbers on the Lindsborg map.

1. Bison Beads Jewelry: Dennis Flores, Noah Flores, 2416 8th Ave. (6 miles west of L'borg on Hwy 4 & 2¾ miles south on 8th Ave.)
2. Old Mill Museum: Anna Erickson, 120 E. Mill St.
3. Red Barn Studio Museum: Julie Unruh, Lesa Larson, 212 S. Main
4. Collections and Essentials: Ron Michael, 110 S. Main
5. Cal McNichols: 109½ N. Main (apartment above Art-shirt)
6. Smoky Valley Arts and Folklife Center: 105 N. Main
7. Fuqua Insurance: Carla Wilson, 130 N. Main
8. Birger Sandzén Memorial Gallery, 401 N. 1st

2. Anna Erickson, Old Mill Museum,

120 E. Mill, (785) 227-3595

Anna Erickson is a first-generation Swede who carries on the rich tradition of textile arts that is so much a part of Scandinavia. Her grandmother, Hilma Eliasson, was an avid knitter who had yarn and needles with her all the time. Anna learned to knit at the age of 5, and expanded her fiber arts to include spinning, weaving, and felting as a young adult. Today, Anna lives on a farm near Lindsborg where she raises Gotland Sheep and uses their soft, lustrous fleece in a variety of textiles. Anna's Gotland sheep can be seen on her website: ericksonValleyFarms.com



3. Red Barn Studio Museum

212 S. Main, (785) 227-2217, lesterraymer.org

The **Red Barn Studio Museum** showcases the many works of Lester Raymer, the incredibly prolific artist that resided in Lindsborg, Free tours (donations are appreciated) are given during our open hours where you may also visit with our resident artist and browse our museum gift shop. Please join us and these guest artists:



Julie Unruh, studio artist, received her BFA from the University of Kansas with a concentration in ceramics. She works in a myriad of mediums that include jewelry, glazed ceramic tiles, plaques, and terra cotta vases. Much of her work features brightly colored, whimsical harlequin and sun faces inspired by the work of artist, Lester Raymer.

Lesla Larson, In 2013, Lesa took a class from Lan Nelson on making stars out of tin can lids similar to Lester Raymer's. Seven years later, she continues to make them and has found her own style.



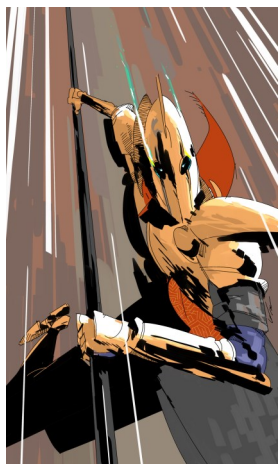
4. Ron Michael, (785) 906-0249 Collections and Essentials, 110 S. Main

Ron Michael: “This year I’ve primarily made vessel and disk forms, but sculptural pieces have crept in too. The ideas for my artwork continue to be an interest in imagined objects and happenings below the prairie surface. Organic forms dominate and showcase a weathered aesthetic, directness, imperfection, texture, asymmetry and a touch of humor.

I am a proponent of the slow art movement and frugal art making practices - employing simple methods and advocating art made at the human scale. Hand tools are the norm and, when practical, locally sourced materials are used. Most of the ceramic elements in my pieces include a high percentage of Kansas clay and are formed using hand-built and/or wheel thrown techniques. For the sculptural forms I’ve used regional stone and upcycled or locally-sourced wood.”



5. Cal McNichols, calmcnichols@instagram 109½ N. Main (apartment above Artshirt)



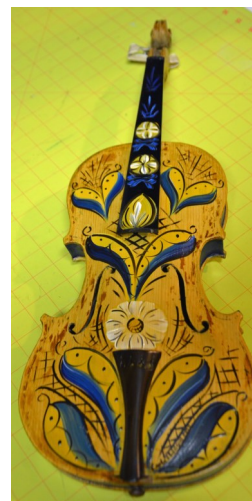
Cal McNichols grew up two hours north of Lindsborg in a small farming community, Burr Oak. He has familial ties to Lindsborg as his mother grew up here and went to Bethany College. Throughout his childhood, he always had an inclination towards art and filled many sketchbooks with his ideas and creations. In 2017, he received a Bachelor’s Illustration degree from John Brown University. Throughout his time at college, he was able to improve his craft and travel to various places including Berlin which has a major art presence.

6. Smoky Valley Arts and Folklife Center 105 N. Main, svafc.ks@gmail.com

This exhibition highlights the history of the Swedish and American development of the Ljuskröna and Apple Tree and their current use in Lindsborg. **The Apple Trees and Ljuskröna** are on loan from members of the larger Smoky Valley Community and provide an excellent chance to compare and explore the creative work and skill of men and women who are descendants of the Swedish Immigrants. Seven exhibit panels on display are part of the larger set of materials developed with funding from the National Endowment for the Arts, the Kansas Historical Society and the Kansas Arts Commission. The exhibition will be open to the public, Fri-Sun 1-5, through the traditional Swedish American Christmas season, which ends on January 13. Marla Elmquist will give a Gallery Talk on the National Endowment for the Arts research projects on the Ljuskröna and Apple Trees. The talk will be live-streamed on Saturday, December 12 at 2:00 pm.



7. Carla Wilson, [instagram.com/flipartlindsborg/](https://www.instagram.com/flipartlindsborg/) Fuqua Insurance, 130 N. Main



Carla J Wilson is a multi-media Swedish & American folk artist. The Swedish folk art is painted in the 1700 - 1800's traditional Dalecarlian Style with Kurbits designs. The American folk art allows her to work in many mediums pushing the limits of, "what if." Most pieces have a story or history to tell. “It’s the research and history behind a piece creating the journey that I love the most,” says Wilson. Wilson is represented at: Fuqua Insurance and the Sandzén Gallery during this 2020 Holiday season. Follow Carla on <https://www.facebook.com/FlipArtLindsborg> and <https://www.instagram.com/flipartlindsborg/>